

Technical sheet

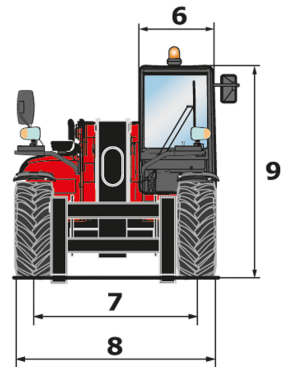
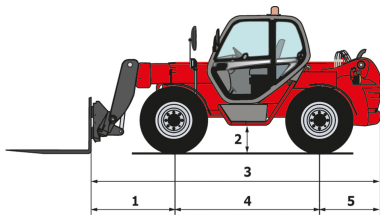
MHT-X 860 S2

Telehandlers



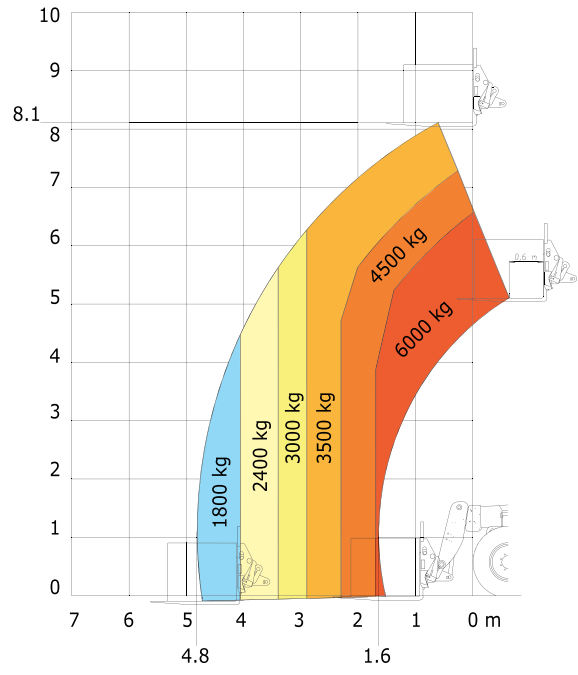
Capacities	Metric	Imperial
Max. capacity	6000 kg	13200 lbs
Max. lift height	8.10 m	26 ft 57 in
Weight and dimensions		
l2 - Overall length of fork carriage	5.36 m	17 ft 58 in
b1 - Overall width	2.40 m	7 ft 87 in
h17 - Overall height	2.46 m	8 ft 7 in
y - Wheelbase	2.73 m	8 ft 956 in
m4 - Ground clearance	0.41 m	1 ft 34 in
b4 - Overall cab width	0.86 m	2 ft 821 in
Wa1 - Frame outer turning radius	3.78 m	12 ft 4 in
Unladen weight (with forks)	11600 kg	25574 lbs
Standard tyres	Pneumatic	Pneumatic
Standard forks	1200X200X60	3.93x0.65x0.19
Engine		
Brand	Perkins	Perkins
Environmental standards	Stage 3A	Stage 3A
Model	1104D 44 T	1104D 44 T
Number of cylinders - Capacity	4 - 4400 cm ³	4 - 268.50 in ³
Power	101 hp / 74.50 kW	101 hp / 74.50 kW
Max. torque	392 Nm at 1400 rpm	289 ft.lbs at 1400 rpm
Laden drawbar pull	10130 daN	22773 lbf
Transmission		
Type	Hydrostatic	Hydrostatic
Number of gears (forward/reverse)	2/2	2/2
Parking brake	Automatic negative parking brake	Automatic negative parking brake
Service brake	Hydraulic	Hydraulic
Hydraulics		
Type of pump	Load sensing pump	Load sensing pump
Hydraulic flow rate - Pressure	140 l/min - 275 bar	36.98 gpm - 72.65 psi
Tank capacities		
Engine oil	140 l	31.70 US gal.
Fuel	120 l	31.70 US gal.
Noise & vibration		
Noise at driving position (LpA)	80.80 dB(A)	80.80 dB(A)
Noise to environment (LwA)	105 dB(A)	105 dB(A)
Vibration on hands/arms	<2.5 m/s ²	-
Miscellaneous		
Steering wheels / Driving wheels	4 / 4	4 / 4
Safety	Standard EN 15000 Cab ROPS - FOPS Level 2	Standard EN 15000 Cab ROPS - FOPS Level 2
Controls	JSM	JSM

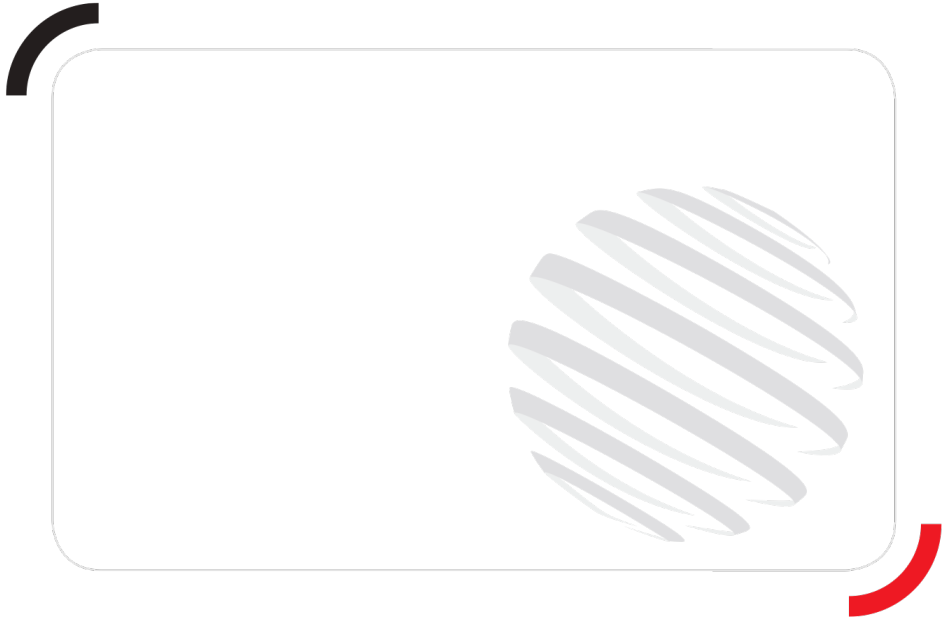
Dimensional drawing



Load chart

Created on July 27, 2017 10:09 AM





Siège Social
430 rue de l'Aubinière - 44150 Ancenis Cedex - France
Tel: +33(0)2 40 09 10 11 - Fax: +33 (0)2 40 09 10 97
www.manitou.com



This brochure describes versions and configuration options for Manitou products which may be fitted with different equipment. The equipment described in this brochure may be standard, optional or not available depending on version. Manitou reserves the right to change the specifications shown and described at any time and without prior warning. The manufacturer is not liable for the specifications given. For more information, contact your Manitou dealer. Non-contractual document. Product descriptions may differ from actual products. List of specifications is not comprehensive. The logos and visual identity of the company are the property of Manitou and may not be used without authorisation. All rights reserved. The photos and diagrams contained in this brochure are provided for information only.

MANITOU BF SA - Limited company with board of directors - Share capital: 39,547,824 euros - 857 802 508 RCS Nantes